

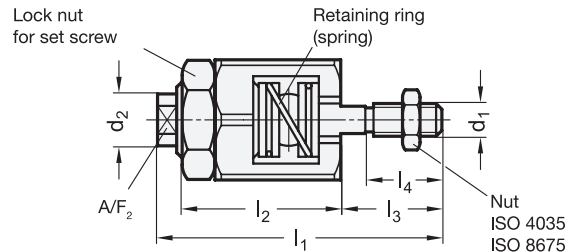
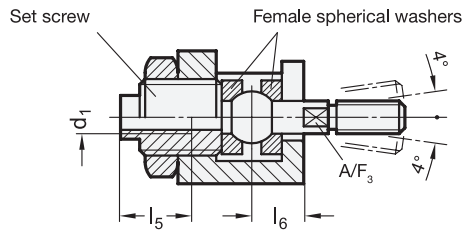
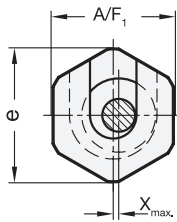
## Quick-fit couplings with angle- and radial off-set compensation

### SPECIFICATION

Steel  
- tempered  
- phosphated  
Retaining ring (spring)  
Stainless Steel AISI 631

### INFORMATION

Quick-fit couplings GN 240.2 have been designed to compensate a **radial** and **angular** off-set. Furthermore they are axially freely adjustable via the set screw.  
A typical application is the axial link to a piston rod of a cylinder operating in any type of fixture or system.  
The coupling is renowned by its very compact construction without any loose components.  
It is **not** designed for the transfer of torque.



### GN 240.2

| Description       | d1       | d2  | e    | l1 ≈ | l2 | l3   | l4 | l5 min. | l6   | A/F 1 | A/F 2 | A/F 3 | x   | Max. pull/<br>push<br>load in kN |      |
|-------------------|----------|-----|------|------|----|------|----|---------|------|-------|-------|-------|-----|----------------------------------|------|
| GN 240.2-M6       | M6       | 9.5 | 24.5 | 52   | 29 | 18.5 | 14 | 13      | 9.5  | 22    | 8     | 5     | 0.6 | 2.5                              | 75   |
| GN 240.2-M8       | M8       | 15  | 30   | 63   | 33 | 23.5 | 18 | 16      | 11.5 | 27    | 13    | 7     | 0.7 | 4.5                              | 135  |
| GN 240.2-M10      | M10      | 21  | 44   | 81   | 43 | 30.5 | 22 | 24      | 16   | 41    | 18    | 12    | 0.7 | 6.5                              | 400  |
| GN 240.2-M10x1,25 | M10x1,25 | 21  | 44   | 81   | 43 | 30.5 | 22 | 24      | 16   | 41    | 18    | 12    | 0.7 | 6.5                              | 403  |
| GN 240.2-M12      | M12      | 21  | 44   | 85   | 43 | 34.5 | 26 | 24      | 16   | 41    | 18    | 12    | 0.8 | 10                               | 405  |
| GN 240.2-M12x1,25 | M12x1,25 | 21  | 44   | 85   | 43 | 34.5 | 26 | 24      | 16   | 41    | 18    | 12    | 0.8 | 10                               | 409  |
| GN 240.2-M16      | M16      | 32  | 60   | 121  | 62 | 45   | 34 | 34      | 26   | 55    | 27    | 18    | 1   | 18                               | 1090 |
| GN 240.2-M16x1,5  | M16x1,5  | 32  | 60   | 121  | 62 | 45   | 34 | 34      | 26   | 55    | 27    | 18    | 1   | 18                               | 1094 |
| GN 240.2-M20      | M20      | 32  | 60   | 129  | 62 | 53   | 42 | 34      | 26   | 55    | 27    | 18    | 1   | 30                               | 1136 |
| GN 240.2-M20x1,5  | M20x1,5  | 32  | 60   | 129  | 62 | 53   | 42 | 34      | 26   | 55    | 27    | 18    | 1   | 30                               | 1143 |

